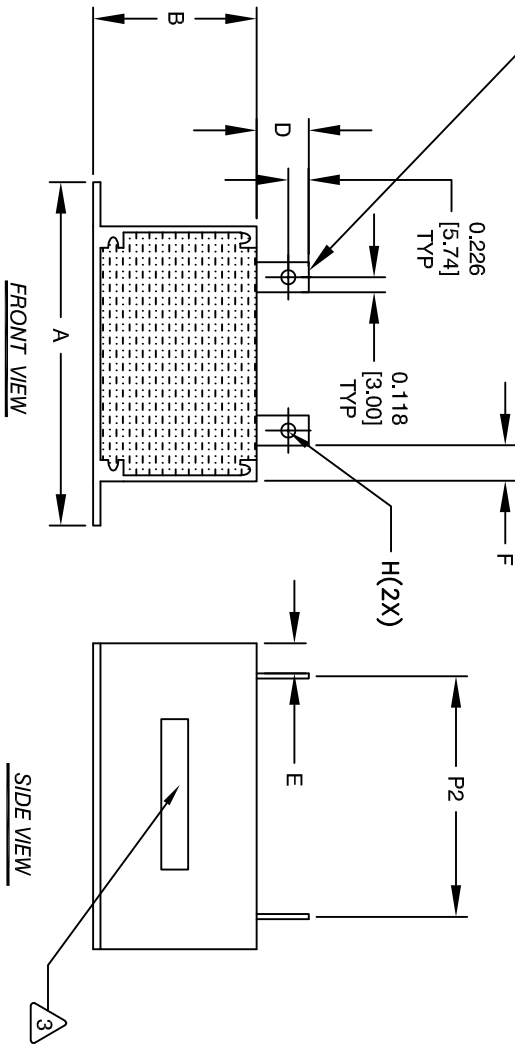
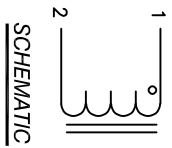


REVISION HISTORY

REV	ECN	DESCRIPTION	BY	DATE	CHK	DATE
A1	010524	UPDATED DIMENSION OF HOLES ON LEADS	TN	01/05/24	JL	01/05/24
B	010725	CORRECTED DIMENSION OF HOLES ON LEADS UPDATED DCR SPEC	TN	01/07/25	JL	01/07/25

RING TERMINAL ARE OPTIONAL



DIMENSIONS

	mm	In
A	85.60±0.51	3.37±0.02
B	40.13±1.27	1.58±0.05
C	61.21±1.27	2.41±0.05
D	11.43 Ref.	0.45 Ref.
E	13.46 Ref.	0.53 Ref.
F	11.18 Ref.	0.44 Ref.
G	0.9x6.0 Ref.	0.04X0.236 Ref.
H	2.72 Min.	0.107 Min.
I	4.06 Min.	0.160 Min.
J	20.50±0.38	0.81±0.015
K	37.00±0.38	1.457±0.015
P1	29.96 Ref.	1.14 Ref.
P2	34.29 Ref.	1.35 Ref.

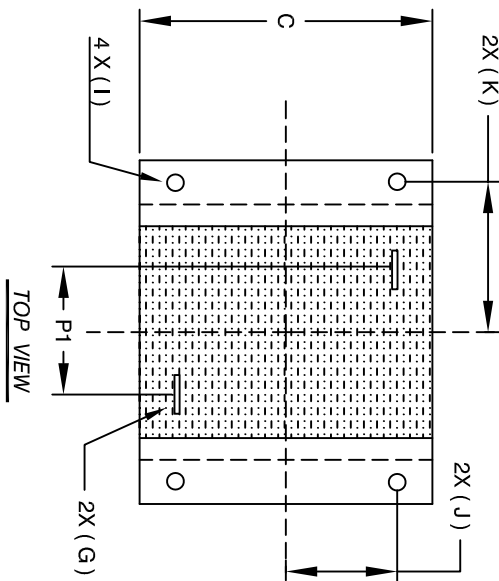
DC BIAS TABLE

DC-BIAS	L
0A	222 uH
5A	221 uH
10A	218 uH
15A	211 uH
20A	201 uH
25A	182 uH
30A	171 uH
35A	157 uH
40A	139 uH
45A	126 uH
50A	112 uH



PICTURE

- APPLICATION: ENERGY STORAGE FILTER, SWINGING CHOKE
- BUILT TO ROHS COMPLIANCE.
- MARK PART NUMBER AND REVISION WHERE SHOWN



QTY	CODE	MFG. P/N	DESCRIPTION	ITEM NO.
	IDENT			

- MATERIALS:

ENCLOSURE: ALUMINUM METAL  
 WIRE: 200°C RATED MAGNET WIRE UL APPROVED  
 CORE: POWDER CORE

NOTES: UNLESS OTHERWISE SPECIFIED, READ FROM BOTTOM UP.  
 CAGE CODE: 5DME2

AUTOCAD		DATE		TITLE:	
SOLIDWORKS	SIGN	7/29/16	AK	High Current Helical Inductor	
DRWN	AK	7/29/16	JM	220 uH, 50 Amps, Horizontal	
CHECKD	JM	7/29/16	JL		
ENGR	JL	7/29/16	APPR		
APPD	BO	7/29/16			

UNLESS OTHERWISE SPECIFIED	
DIMENSIONING AND TOLERANCE PER ANSI Y14.5M	
ALL DIMENSIONS ARE IN INCHES AND [MILLIMETERS]	
TOLERANCE INCHES: .XXX±0.010 .XX±0.020 .XXX±.025 .X±.051	
TOLERANCE METRICS: ±.40°30' ±.40°30'	
ANGLE PROJECTION	
DO NOT SCALE DRAWING	

PARTS LIST		MFG. P/N		DESCRIPTION		ITEM NO.
www.coliws.com		Coil Winding Specialist, Inc.				
sales@coliws.com		353 W GROVE AVE				
		ORANGE, CA 92665				